



# TIMES OF THE DAY



Scan to review worksheet

Expemo code:  
13VZ-U168-R43P

## 1

### Parts of the day

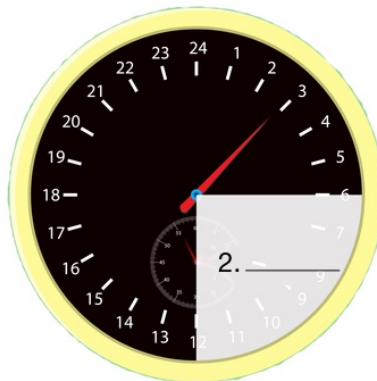
Write the correct words into the spaces in the picture. Look at numbers on the pictures to help you.

afternoon

evening

morning

night



In British English we don't use the 24hr clock to tell the time. We use the 12hr clock + am or pm. There are different ways to say the same time.



**Example - it is 19:00:**

It's 7pm.

It's 7 o'clock.

It's 7 o'clock in the evening.

Do you use the 24hr clock in your language?

**2**

## The sun and times of the day

Match the words to the pictures.

midday

midnight

sunrise

sunset



1. \_\_\_\_\_

2. \_\_\_\_\_

3. \_\_\_\_\_

4. \_\_\_\_\_

Now, choose the correct preposition to complete the sentences below.

after

at

before

down

in

up

- Midnight is 12 o'clock \_\_\_\_\_ night.
- Midday is 12 o'clock \_\_\_\_\_ the middle of the day.
- Sunrise is when the sun comes \_\_\_\_\_ .
- Sunset is when the sun goes \_\_\_\_\_ .
- It is darker \_\_\_\_\_ the sun rises.
- It gets warmer \_\_\_\_\_ the sun rises.

**3**

## At or in?

When we talk about a **part of the day** we use **in + the**:

**in the morning, in the afternoon, in the evening**

**BUT at night NOT in the night**

**Examples:**

*In the morning* I go swimming.

*At night* I sleep.

When we talk about a **specific time in a day**, we use **at**:

**at 3 o'clock, at midnight, at sunrise**



Choose 'at' or 'in' to complete the sentences.

1. We will meet \_\_\_\_\_ 7.30pm.
2. I'm going to the cinema \_\_\_\_\_ the evening.
3. It gets colder \_\_\_\_\_ sunset.
4. I like to go out in the city \_\_\_\_\_ night.
5. I will be at work early \_\_\_\_\_ the morning.
6. They have lunch \_\_\_\_\_ midday.
7. I like to go running \_\_\_\_\_ the afternoon.
8. My mother gets up \_\_\_\_\_ sunrise.

Work with a partner. Ask them what they do at different times of the day like in the examples.

Examples:

A: What do you do in the morning?

B: I go to work in the morning.

A: What do you do in the evening?

B: In the evening I meet my friends.

## 4

### Quick questions

Work with a partner. Ask and answer the questions without looking at the exercises on the worksheet. Write your answers down.

1. What is before night?
2. Which part of the day is 11pm?
3. What is between morning and evening?
4. Which part of the day is 9am?
5. What time is midnight?
6. What is the name for the time when the sun goes down?
7. What time is midday?
8. What is the name for the time when the sun comes up?